

contents

Preface *xiii*

1 AccuMark Basics | 3



Chapter Objectives 3
Introduction 4
Gerber Launch Pad 4
Storage Areas 5
Creating a Storage Area 5
• AccuMark Explorer 7
• Is There Anything in Your Storage Area? 7 • Surprised? 7

• But What Do the Parameters Do? 8

Parameters: P-User-Environment 8

Options Available for P-User-Environment 10

Parameters: P-Notch 11

Notches 11 • Notch Types 12

Creating New Files in AccuMark Explorer 13

Data Management 14

Import Zip 15

Copy and Paste 17

Copying Data Files to Multiple Storage Areas 18

Move Data 20

Moving Data Files to Multiple Storage Areas 21

Delete Data 23

Wildcard Search 24 • Deleting Data Files from Multiple Storage Areas 25

Rename Data 26

Renaming Data Files in Multiple Storage Areas 27

Save As 29

Time to Practice on Your Own: Create a Storage Area 33

Chapter Summary 34

Chapter Takeaways 34

Chapter Quiz 34

2 AccuMark Pattern Design Basics | 37



Chapter Objectives 37
Introduction 38
The World of Pattern Design 38
Opening the Pattern Design Software 38
Open Pattern Design from AccuMark Explorer 39 • ...Or Single-Click Right to Open Pattern Design from AccuMark

Explorer 39 • To Open Pieces 40 • To Open Models 41

Storage Area Path 41

Guided Exercise 2.1: File/Open 43

Where Is the Pattern Data Stored? 45

For Your Reference 47

Mid-Chapter Summary 47

The Pattern Design Screen 47

The User Input Box 49 • Popup 50 • Prompt Validation 50

• Click n Go 51 • Calculator 52 • Cursor Shapes 52

• Piece Icon Menu 53

Chapter Summary 62

Chapter Takeaways 62

Chapter Quiz 62

3 Creating Models | 65



Chapter Objectives 65

Introduction 66

Style 9000 66

The Shirt—Style 9000 66

The Model File Editor 67

Did You Know? 69 • Paste Piece 69

• Piece Orientation 70 • Pieces Cut

Cross Grain or on the Bias 72

Creating a Model File 72

Creating Model Options/Variations to the Style 73

Time to Practice on Your Own: Create a Model for Style 9000	75
Quick View	76
Optional Marking Functionality (Available in the Model File Editor)	77
Did You Know?	79
Example of a Completed Model File Editor	81
Example of a Completed Model File Editor with Model Options	81
Chapter Summary	82
Chapter Takeaways	83
Chapter Quiz	83

4 Creating Styles | 85



Chapter Objectives	85
Introduction	86
Styles	86
Copy Model	86
Guided Exercise 4.1: Copy a Model/ Create a New Style	89
A Quick Summary	95

The Create Piece Menu	95
Rectangle	95
Guided Exercise 4.2: Square Sofa Pillows	98
Circle	100
Guided Exercise 4.3: Round Sofa Pillows	102
Oval	104
Guided Exercise 4.4: Oval Sofa Pillows	106
Guided Exercise 4.5: Create a Model in Pattern Design	108
The Create Piece Menu and Models	112
Time to Practice on Your Own: Create a Model in Pattern Design	115
Chapter Summary	116
Chapter Takeaways	116
Chapter Quiz	116

5 Creating Pieces | 119



Chapter Objectives	119
Introduction	120
The Create Piece Menu	120
Creating Rectangles	120
Guided Exercise 5.1: Shirt Pockets	123
Guided Exercise 5.2: Waistbands Skirt	129

Guided Exercise 5.3: Circle Skirts	130
Guided Exercise 5.4: Sleeve Ruffles	133
Collar	137
Sleeve	138
Facing	139
Fusible	140

Binding	142
Ruffle	143
Copy	145
Extract	145
Guided Exercise 5.5: Front Facings	147
Trace	152
Guided Exercise 5.6: Turnback Facings	156
Guided Exercise 5.7: Arm Facings and Neck Facings	160
Graded Size	164
Altered Size (AM)	164
Time to Practice on Your Own: Create Dress Blocks	165
Chapter Summary	166
Chapter Takeaways	166
Chapter Quiz	166

6 Digitizing | 169



Chapter Objectives	169
Introduction	170
What Is a Digitizer?	170
How Does the Table Work?	170
• What's the Difference between a Digitizer and a Silhouette?	171
• Before Digitizing...	171
Grade Rule Tables	171

Pattern Preparation	174
Piece Identification	174 • Piece Orientation 175
The Digitizing Menu	175
The Digitizing Cursor	176
Pattern Coding	176
Digitizing	177
Digitizing a Closed Piece	178
Did You Know?	180
Digitizing a Mirrored Piece	180
Piece Verify	182
Verify the Options for Digitized Data	182
Verify the Digitized Data	183
Verify the Piece	184
Verify the Piece in Pattern Design	184
Did You Know?	185
Editing the Digitized Data	186
Example of Digitized Data	188
To View the Digitizing Process	190
Digitizing with Grade Rules	191
Digitizing a Closed Piece	192 • Digitizing a Mirrored Piece 192
Time to Practice on Your Own: Digitize a Pattern	193
Chapter Summary	194
Chapter Takeaways	194
Chapter Quiz	194

7 The Silhouette System | 197



- Chapter Objectives 197
- Introduction 198
- The Silhouette Table 198
- The Silhouette Menu 199
- What's the Difference between a Mouse and a Stylus Pen? 200
- Draft Scale 200

Line/Curve 201

To Create Curve Points 201 • To Erase Points 202 • To Finish the Perimeter 202 • To Add More Lines 202 • To Add a Grain Line 203 • To Add a Drill Mark 203 • To Add a Second Drill Mark 203 • Finished? 203

Create Piece 204

Reorient 205

Sketch 206

Draft Trace 207

Note/Illustrate 208

Point Placement 209

A Common Message 210

Rule Table 210

Guided Exercise 7.1: Input a Pattern 211

Guided Exercise 7.2: Knockoffs 218

Time to Practice on Your Own: Draft/Line/Curve 219

Chapter Summary 220

Chapter Takeaways 220

Chapter Quiz 220

8 Plotting | 223



- Chapter Objectives 223
- Introduction 224
- Piece Lists 224
- Did You Know? 224 • Creating a Piece List 225
- The Annotation File 226
- Piece Annotation—Default or

Special? 226 • Creating a Piece Annotation File 228

Internal Labels 230

Worksheet for Internal Labels 231

Piece Plot Parameters 235

P-Piece-Plot Parameter Table 236 • Updating the P-Piece-Plot Parameter Table 237

Plotting Pieces 238

Plot Queue 240

Plot Queue Actions 242 • Deleting Selective Plot Queue Items 243

Plotting from Pattern Design 244

Pattern Design Preferences 244 • Plotting from Pattern Design 245

- Example of a Completed Annotation File 246

Time to Practice on Your Own: Plot Mini Pieces for Style 9000 247

Chapter Summary 248

Chapter Takeaways 248

Chapter Quiz 248

9 Measure | 251



Chapter Objectives 251

Introduction 252

The Measure Menu 252

Line Length 253 • Distance 2 Line 254 • Perimeter 2 Pt/Measure Along Piece 257 • Distance to Notch/Measure Along Piece 258

- Distance 2 Pt/Measure Straight 258

- Distance 2 Pt/Measure Finished 259 • Piece Perimeter 260
- Piece Area 260 • Angle 261 • Clear All Measurements 262
- Clear Measurement(s) 262 • Hide/Show Measurements 262

Guided Exercise 9.1: Measure a Pattern 263

Time to Practice on Your Own: Measure Your Pattern 268

Chapter Summary 269

Chapter Takeaways 269

Chapter Quiz 269

10 Point | 271



Chapter Objectives 271

Introduction 272

Viewing Points 273

All Points 273 • Intermediate Points 274 • Point Numbers (AM) 275

- Grade Rules 275
- Point Types/Attributes 276 • Total Piece Points 276

Points 277

Add Point 277 • Mark X Point 277 • Add Drills 278 • Add Drills Dist 279 • Add Points Line 280 • Add Points Ln Dist 282

Guided Exercise 10.1: Drill Marks 284

Point Intersect 288 • Delete Point 288 • Reduce Points 289

- Total Piece Points 290 • Copy Point Numbers (AM) 290 • Align 2 Points 291 • Move Single Point 292 • Move Point 293 • Move Pt Line/Slide 293 • Move Point Horiz 295 • Move Point Vert 296
- Move Smooth 296 • Move Smooth Line 297 • Move Smooth Horiz 298 • Move Smooth Vert 299 • Armhole/Sleeve Cap 300
- Reshape Curve 303

Guided Exercise 10.2: Mini Skirt 305

Guided Exercise 10.3: Petite Pants 308

Time to Practice on Your Own: Create a Cap Sleeve T-Shirt 313

Chapter Summary 314

Chapter Takeaways 314

Chapter Quiz 314

11 Editing Point Attributes and Internal Line Labels | 317



Chapter Objectives 317
Introduction 318
Edit Point Info 318
Filtering 320
Point Attributes 321
D1: Attribute L – Lift and Plunge 321
• D2: Attribute K – Alternate Start Point 322
• D3: Attribute Z – Stacking Point 323

Grade Attributes 324

D4: Attribute A – Grade Point Averaging 324 • D5: Attribute X – Fixed Next Grade Point 324 • D6: Attribute P – Fixed Prev Grade Point 324 • D7: Attribute F – Facing Point 327 • D8: Attribute S – Smoothing Point 328 • D9: Attribute N – Non-Smoothing Point 328

Segment Blocking/Buffering 329

Attribute B – Start of Segment 329 • Attribute Q – End of Segment 329 • Attribute E – Entry Point 330

Edit Line Info 331

Internal Labels 332

Creating Internal Labels in Pattern Design 333 • Label A: 2 Point Annotation 333 • Label B: 3 Point Annotation 334 • Label D: Drill Marks 335 • Label H: Internal Cutouts 336 • Label I: Internal Lines 337 • Label P: Fixed Piecing 337 • Label R: Right Side Up 338 • Label S: Seam Allowance 339

Guided Exercise 11.1: Establish a Grade Line and a Grain Line 340

Guided Exercise 11.2: Remove Grading 343

Time to Practice on Your Own: Create Internal Line Labels 345

Chapter Summary 346

Chapter Takeaways 346

Chapter Quiz 346

12 Creating Lines | 349



Chapter Objectives 349
Introduction 350
Viewing Lines 350
Hide/Ignore 351 • Numbers 351
• Names 352 • Types/Labels 352
• Verify by Label 353

Creating Lines 353

Digitized 353 • Digitized—Right

Mouse Button Options Available 354 • 2 Point 354 • 2 Point - Curve 356

Guided Exercise 12.1: Skirt Pockets 357

Guided Exercise 12.2: Front Bodice Draft 364

Offset Even 376 • Offset Uneven 377 • Copy Line 377 • Mirror 378
• Blend 379 • Tangent 379 • Tangent On Line 380 • Tangent Off Line 380 • Tangent 2 Circle 381
• Divide Angle 381

Guided Exercise 12.3: Bell-Bottoms 383

Guided Exercise 12.4: Applique Placement 387

Perpendicular Line Menu 390

Guided Exercise 12.5: Fisheye Darts 393

Time to Practice on Your Own: Draft a Back Bodice 400

Chapter Summary 402

Chapter Takeaways 402

References 402

Chapter Quiz 402

13 Conics | 405



Chapter Objectives 405

Introduction 406

Conics Menu 406

Circles 406 • Ovals 407 • Circle Ctr Rad 407 • Circle 2 Pt Center 408
• Circle 3 Pt 409 • Cir Tang 1 Line 410
• Cir Tang 2 Line 411 • Curved Intersection 411 • Oval Orient 414

• Oval Focus 415

Guided Exercise 13.1: Scallops 417

Time to Practice on Your Own: Finish the Scallops Project 424

Chapter Summary 425

Chapter Takeaways 425

Chapter Quiz 425

14 Modifying Lines | 427



Chapter Objectives 427

Introduction 428

Delete Line 428 • Replace Line 428
• Swap Line 429
• Unclipped Perimeter (MK/V8) 430
• Clipped Perimeter 432

Guided Exercise 14.1: Balance a Sleeve 433

Guided Exercise 14.2: Shape the Side Seam 436

Modify Line 439

Guided Exercise 14.3: Back Yokes 454

Time to Practice on Your Own: Palazzo Pants 459

Chapter Summary 460

Chapter Takeaways 460

Chapter Quiz 460

15 Darts | 463



Chapter Objectives 463
 Introduction 464
 Dart Menu 467
 Rotate 467 • Distribute Same Line 468 • Distribute/Rotate 469
 • Combine Same Line 470
 • Combine Diff Line 471
 • Add Dart 472 • Add Dart with Fullness 473 • Fisheye Dart 474

• Change Dart Tip 475 • Equal Dart Legs 476 • Balanced Resize 477 • One Sided Resize 477 • Open Dart 478
 • Fold/Close Dart End 479 • Smooth Line 480 • Flatten Line Segment 480 • Convert to Dart 481

Guided Exercise 15.1: Intersecting Darts 483

Asymm Fold Menu 486

Line Fold 486 • Unfold 487 • Unfold Keep 487 • Line to Line Fold 487 • Match Points 488 • Dart Fold 489 • Pleat Fold 489
 • Perim Pt Fold 490

Time to Practice on Your Own: Waistband Facing 491

Chapter Summary 492

Chapter Takeaways 492

References 492

Chapter Quiz 492

16 Pleats and Fullness | 495



Chapter Objectives 495
 Introduction 496
 Pleats 496
 Pleat Menu 497
 Rules for Creating Pleats Using the Computer 497
 • Understanding Pleat Terminology 497
 • Knife Pleat 498

• Box Pleat 500 • Variable Pleat 501 • Taper Pleat 503
 • Did You Know? 505

Guided Exercise 16.1: Pin Tucks 507

Adding Fullness 511

Fullness Menu 511

Fullness 511 • 1 Point Fullness 513 • Variable Fullness 514
 • Tapered Fullness 515 • Parallel Fullness 517 • Fan 518
 • Taper Slash n Spread 519 • Parallel Slash n Spread 521

Guided Exercise 16.2: Asymmetric Maillot 523

Time to Practice on Your Own: Create the Asymmetric Maillot Back 531

Chapter Summary 532

Chapter Takeaways 532

References 532

Chapter Quiz 532

17 Modifying Pieces | 535



Chapter Objectives 535
 Introduction 536
 Modify Piece Commands 536
 Fold Keep 536 • Delete Piece from Work Area 537 • Combine/Merge 538
 • Scale 539 • Shrink/Stretch 540
 • Mirror Piece 542 • Fold Mirror 543
 • Unfold Mirror 544 • Open Mirror 544
 • Annotate Piece 545 • Piece to Menu 547

Guided Exercise 17.1: Shrink Stretch 548

Move Piece 551 • Flip Piece 551 • Rotate Piece 552 • Set and Rotate/Lock 553 • Walk Pieces 555

Guided Exercise 17.2: Walk the Piece and Add Notches 557

Guided Exercise 17.3: Walk the Piece and Make Corrections 562

Use Position 566 • Define Position 566 • Remove Position 567

Guided Exercise 17.4: Define the Original Position 568

Guided Exercise 17.5: Define Multiple Positions 572

Realign Grain/Grade Ref 574 • Lock to Grid 574
 • Anchor/Unanchor 575

Split Piece 576

Split on Line 577 • Split on Digitized Line 578 • Split Point to Point 580 • Split Horizontal 581 • Split Vertical 582
 • Split Diagonal Left 582 • Split Diagonal Right 582

Time to Practice on Your Own: The Ski Jacket 583

Chapter Summary 584

Chapter Takeaways 584

Chapter Quiz 584

18 Grading | 587



Chapter Objectives 587
 Introduction 588
 The X and Y Axes 589
 Did You Know? 590
 Grade Distribution 591
 Grading Example 592
 Grading Methods 593

Grading Methods 594

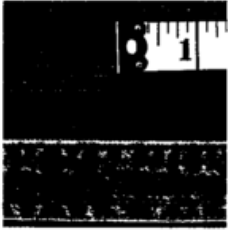
Grading Measurements: Manual or Computer 595
 Fractions 596 • Decimal Fractions 597

Grading Worksheet 598

How to Find the Grading Axis 599

Grade Rule Tables 600
 The Rules Dropdown Menu 604 • Right Mouse Button Menus 605
 Calculating Grade Rules 606
 Grading Specifications 606
 Time to Practice on Your Own 609
 Grading Specifications 610 • Grading Breakdown 610
 • Grading Worksheet 611
 Chapter Summary 612
 Chapter Takeaways 612
 References 612
 Chapter Quiz 613

19 Grading Exercises | 615



Chapter Objectives 615
 Introduction 616
 Guided Exercise 19.1: Assign the Grade Rule Table 618
 Guided Exercise 19.2: Assign Grade Rules 619
 Guided Exercise 19.3: Display the

Grade 621
 Guided Exercise 19.4: Copy the Grade Rules from One Pattern to the Next 622
 Guided Exercise 19.5: Apply Grading by Typing in X and Y Measurements 624
 Guided Exercise 19.6: Edit or Manipulate the Grade 626
 Did You Know? 629
 Guided Exercise 19.7: Export Grade Rules into the Grade Rule Library 630
 Guided Exercise 19.8: Create Offset Grading 634
 Guided Exercise 19.9: Grade Two or More Patterns at the Same Time 636
 Guided Exercise 19.10: Make Sure the Graded Pieces Will Sew 637
 Guided Exercise 19.11: Stack the Grading at a Different Point 639
 Guided Exercise 19.12: Resize the Pattern 640
 Guided Exercise 19.13: Walk the Notch In 643
 Guided Exercise 19.14: Nest Patterns into the Computer 645
 Guided Exercise 19.15: Apply Grading to a Piece with Seam Allowance 649
 Guided Exercise 19.16: Check Graded Notches 653
 Guided Exercise 19.17: Create Multiple Grading Axes 655
 Guided Exercise 19.18: Establish a Grading Movement 658
 Guided Exercise 19.19: Copy the X or Y Grading Movement 659
 Guided Exercise 19.20: Flip the X or Y Grading Movement 661
 Guided Exercise 19.21: Copy the Grade from a Restacked Pattern 662

Guided Exercise 19.22: Copy the Graded Line Length from One Pattern to the Next 663
 Guided Exercise 19.23: Maintain the Same Angle for All Graded Sizes 665
 Guided Exercise 19.24: Maintain Parallel Lines for All Graded Sizes 667
 Did You Know? 668
 Chapter Summary 670
 Chapter Takeaways 670
 Chapter Quiz 670

20 Finishing Touches | 673



Chapter Objectives 673
 Introduction 674
 Notches 674
 Add Notch 674 • Delete Notch 675
 • Angled Notch 675 • Intersection Notch (MK/V8) 676 • Tangent (V8) 677
 Guided Exercise 20.1: Manage Notches 679

Guided Exercise 20.2: Adjust Notches 682
 Reference Notches 685
 Add (V8) 685 • Move (V8) 686 • Change Reference (V8) 686
 • Change Keep Position (V8) 687 • Group (V8) 688 • Add Group on Line (V8) 689 • Add Group on Line Dist (V8) 690
 Seams 690
 Define/Add Seam 691 • Add/Remove Seam 693 • Swap Sew/Cut 694
 Guided Exercise 20.3: How to Apply Seam Allowance to an Old Production Pattern 696
 Guided Exercise 20.4: How to Apply Seam Allowances to a Pattern Created from a Basic Block 700
 Regular Corner 703 • Slant Corner (AM) 704 • Mitered Corner 704
 • Mirrored Corner 705 • Turnback Corner 706 • Perpendicular Step Corner 707 • Squared Corner 708
 • Match Squared Corner (AM) 709
 Guided Exercise 20.5: How to Apply Seam Allowance to a Pattern with Clipped Corners 710
 Chapter Summary 716
 Chapter Takeaways 716
 Chapter Quiz 716

21 Production Ready | 719



Chapter Objectives 719
 Introduction 720
 AccuMark Find 720
 Fill in the Advanced Search Information 721 • The Results 722
 • Delete the Data? 722
 Export Zip 723

DXF Data 725

Import or Export? 726 • Exporting DXF Data 726 • Importing DXF Data 728

Costing Markers 729

Update the Model File 729 • Edit the Model File 730 • Create the Costing Marker 731 • AccuMark Data Files Needed to Process a Costing Marker 732

Measurement Charts 733

Create a Template 733 • Open Pattern Design 734 • Open the Measurement Chart 735 • Fill in the Measurement Chart 736 • The Constant Box 737 • Save the Information 738

Time to Practice on Your Own: Everyday Tasks 740

Chapter Summary 741

Chapter Takeaways 741

Chapter Quiz 741

Appendix

Symbols 744

Pattern Design Screen Layout 746

Pattern Design Preferences and Options 750

Pattern Design Seam Properties 760

Glossary | 763

Bibliography | 767

Index | 769