

SHAKESPEARE SURVEY

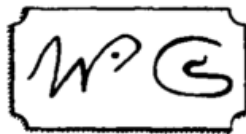
AN ANNUAL SURVEY OF
SHAKESPEARIAN STUDY & PRODUCTION

I

EDITED BY
ALLARDYCE NICOLL

Issued under the Sponsorship of

THE UNIVERSITY OF BIRMINGHAM
THE SHAKESPEARE MEMORIAL THEATRE
THE SHAKESPEARE BIRTHPLACE TRUST



CAMBRIDGE
AT THE UNIVERSITY PRESS

1948 ·

CONTENTS

Notes are placed at the end of each contribution

<i>List of Illustrations</i>	page ix
Studies in the Elizabethan Stage since 1900 by ALLARDYCE NICOLL	I
<i>Titus Andronicus</i> on the Stage in 1595 by J. DOVER WILSON	17
A Note on the Swan Theatre Drawing	23
The Bankside Theatres: Early Engravings by I. A. SHAPIRO	25
Shakespeare and the Blackfriars Theatre by GERALD EADES BENTLEY	38
Shakespeare's Bad Poetry by HARDIN CRAIG	51
The Folger Shakespeare Library by JAMES G. MCMANAWAY	57
The Heritage of Shakespeare's Birthplace by LEVI FOX	79
Three Shakespearian Productions: A Conversation by MICHEÁL MACLIAMMÓIR	89
Four Lears by CHARLES LANDSTONE	98
London Productions reviewed by GEORGE RYLANDS and UNA ELLIS-FERMOR	103
Stratford Productions reviewed by H. S. BENNETT and GEORGE RYLANDS	107
<i>International News</i>	112
The Year's Contributions to Shakespearian Study	
1. Critical Studies reviewed by UNA ELLIS-FERMOR	118
2. Shakespeare's Life and Times reviewed by CLIFFORD LEECH	122
3. Textual Studies reviewed by JAMES G. MCMANAWAY	127
<i>Books Received</i>	132
<i>Index</i>	134